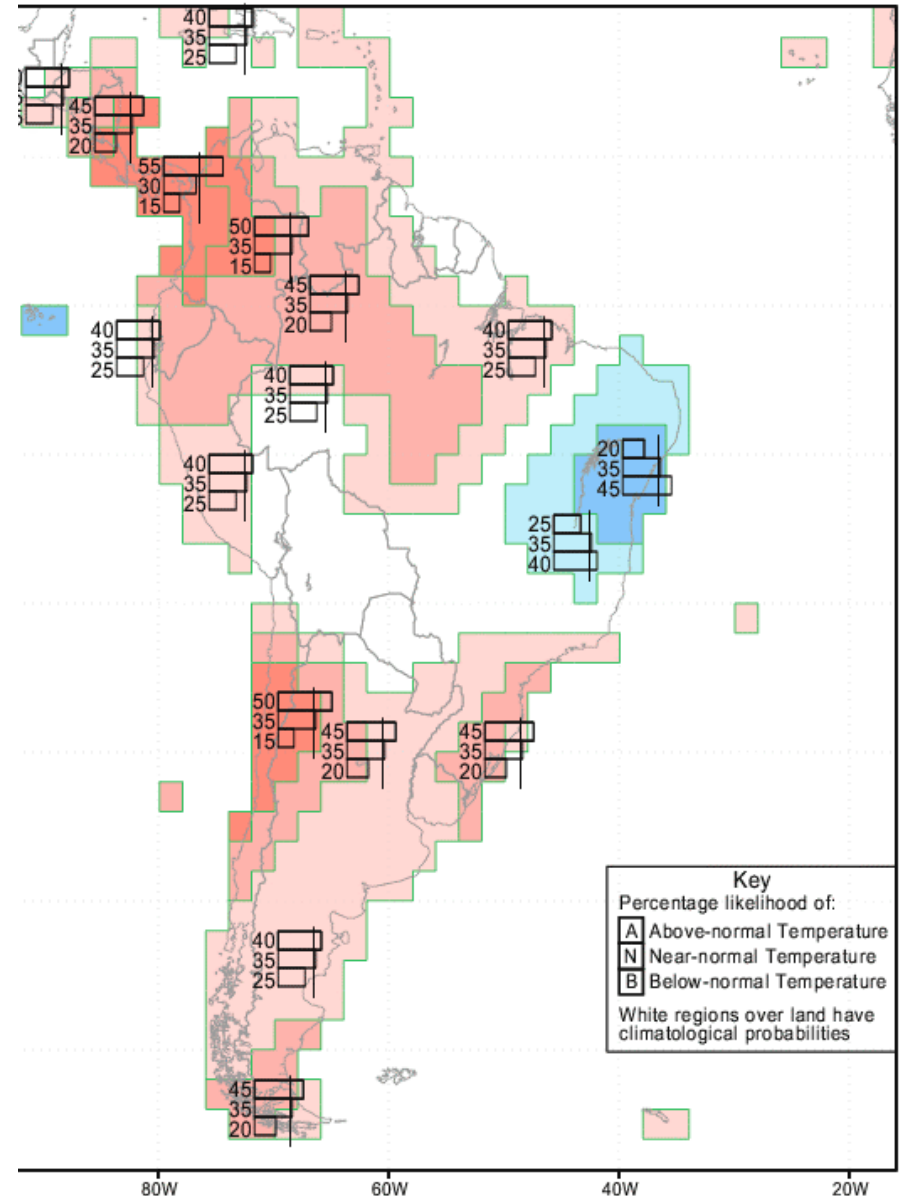
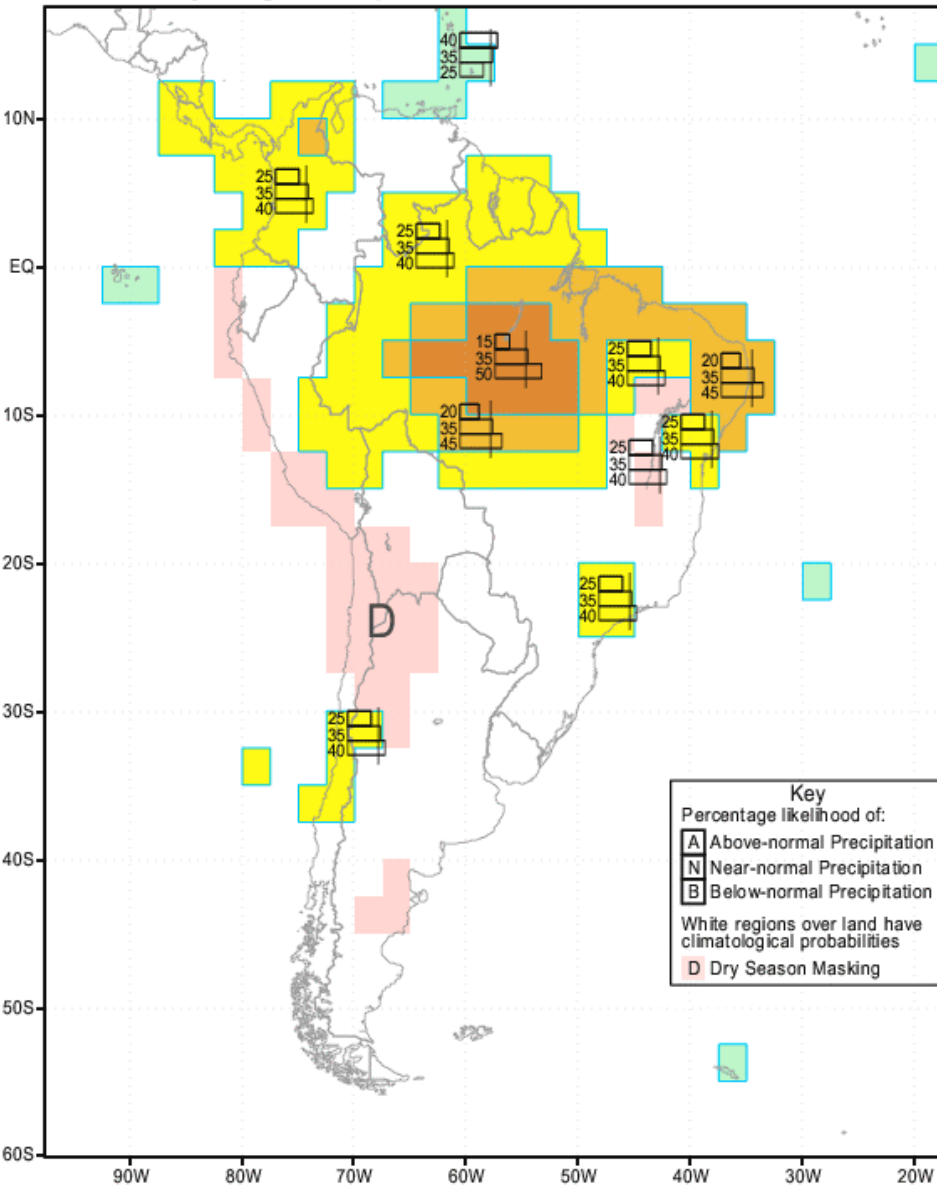
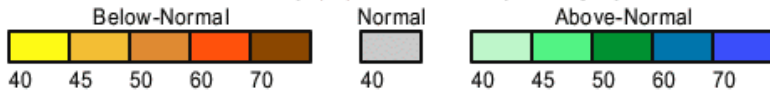


IRI Multi-Model Probability Forecast for Precipitation for July-August-September 2004, Issued June 2004

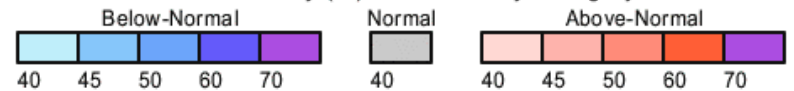
IRI Multi-Model Probability Forecast for Temperature for July-August-September 2004, Issued June 2004



Probability (%) of Most Likely Category

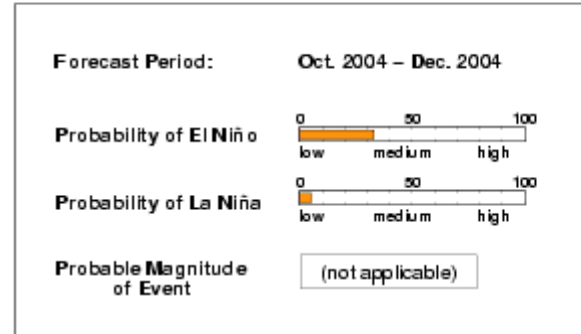


Probability (%) of Most Likely Category

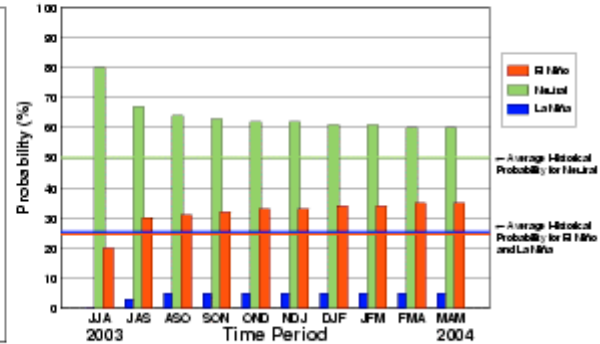


Overall conditions in the tropical Pacific remain near-neutral. Based on the latest observations and forecasts, it is likely that near-neutral but slightly warmer than average conditions will prevail through the rest of 2004.

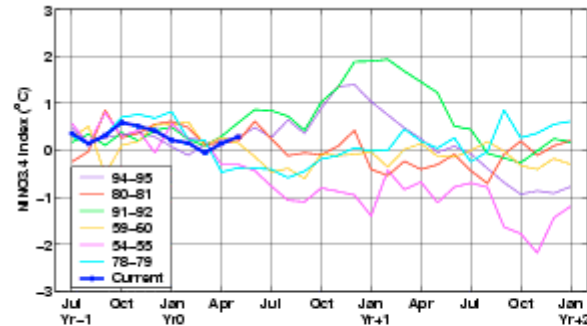
Current ENSO Forecast Summary¹



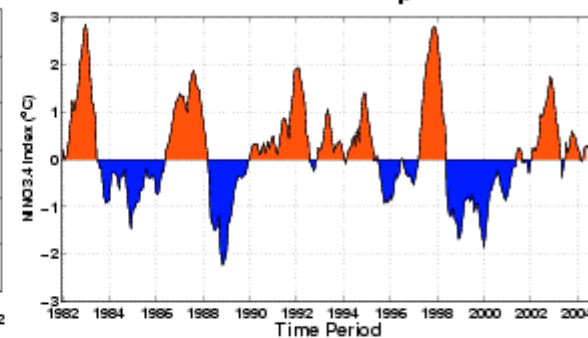
IRI Probabilistic ENSO Forecast²



Current Condition vs. Similar Conditions²



Historical Sea Surface Temperature Index²



Historically Speaking

El Niño and La Niña events tend to develop during the period Apr-Jun and they:

- Tend to reach their maximum strength during Dec-Feb
- Typically persist for 9-12 months, though occasionally persisting for up to 2 years
- Typically recur every 2 to 7 years

¹Probability of an El Niño refers to the likelihood of a sustained (that is, over several seasons) warming across a broad region of the eastern and central tropical Pacific, not just along coastal South America.

²Based on sea surface temperature departures from the long-term average over the 'NINO3.4' region (120-170W, 5S-5N).