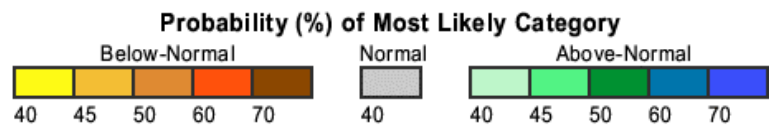
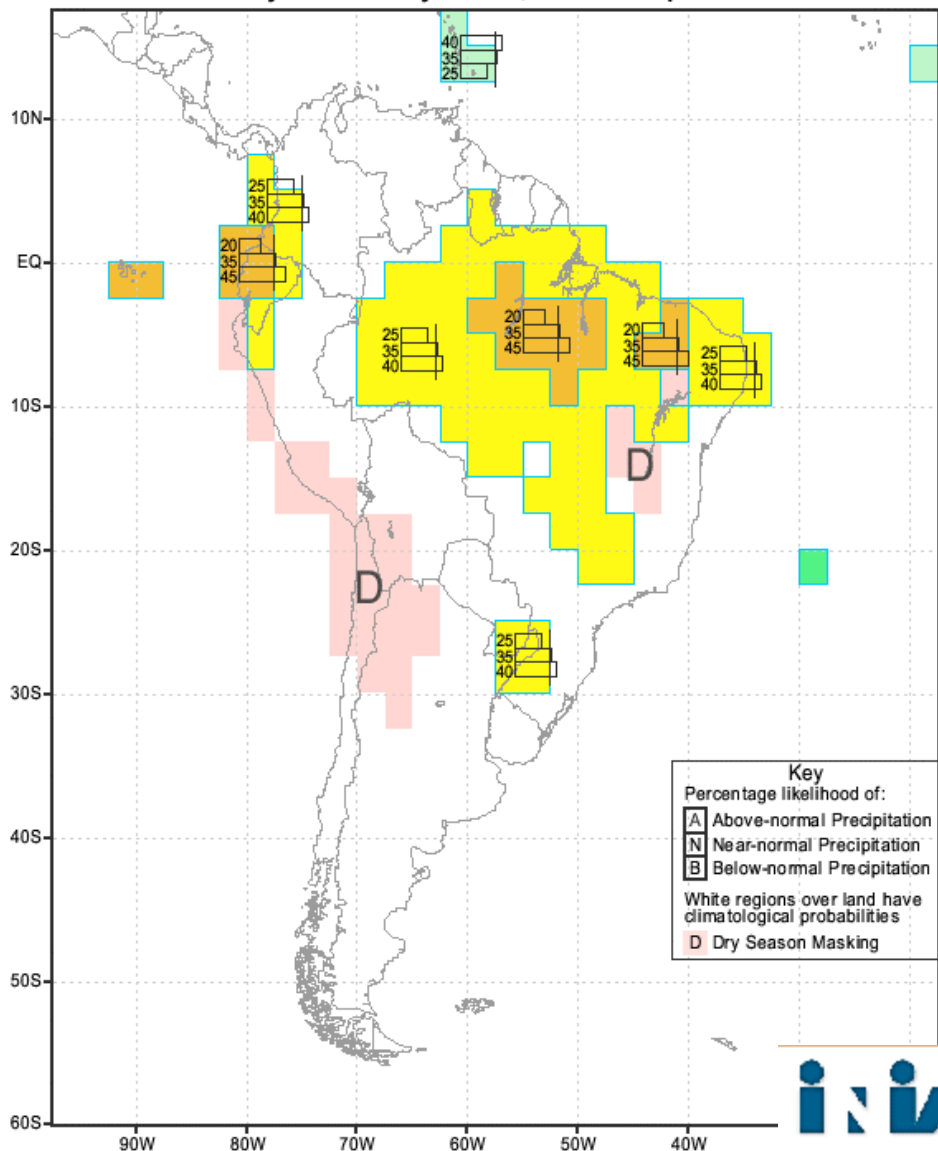
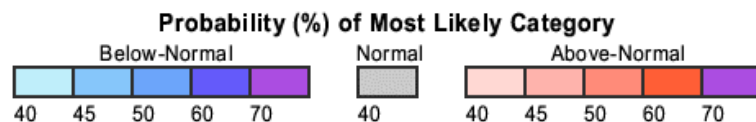
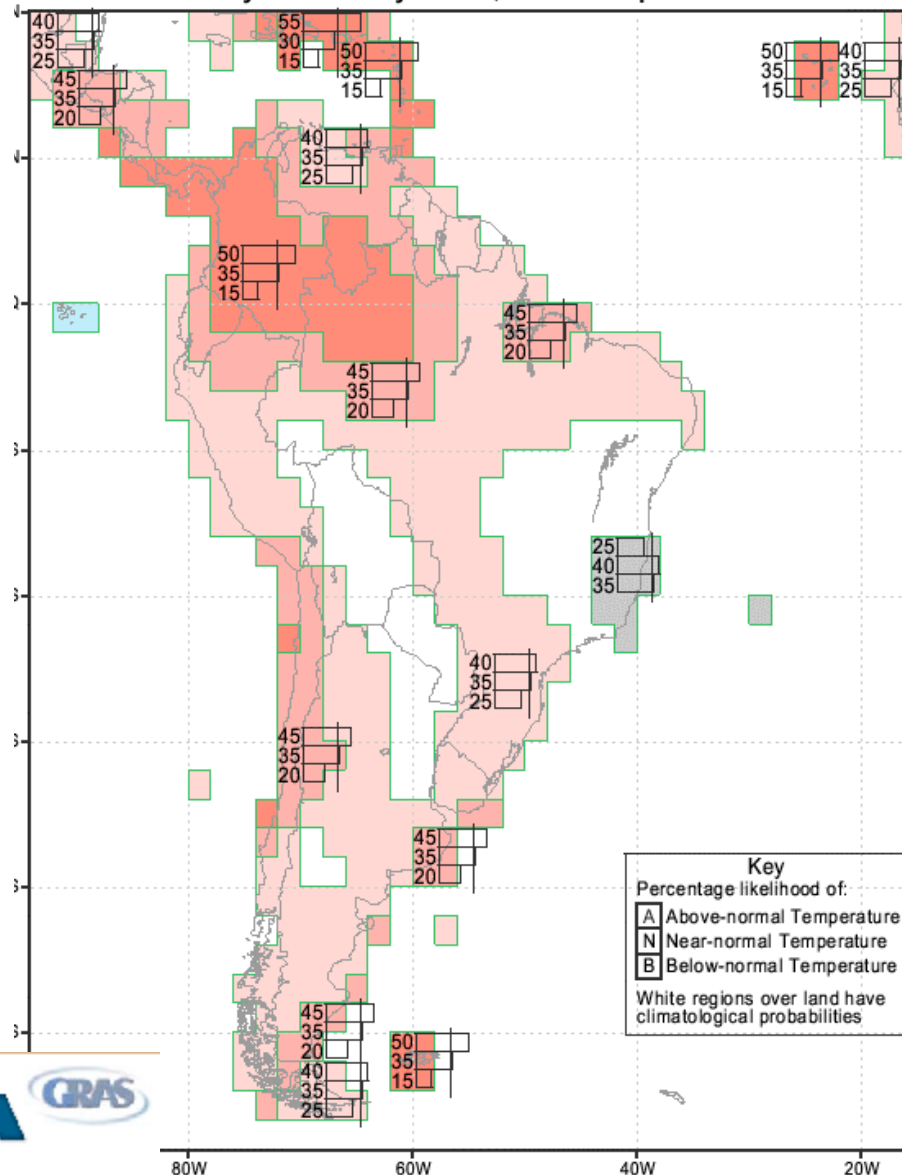


IRI Multi-Model Probability Forecast for Precipitation
for May-June-July 2004, Issued April 2004



IRI Multi-Model Probability Forecast for Temperature
for May-June-July 2004, Issued April 2004

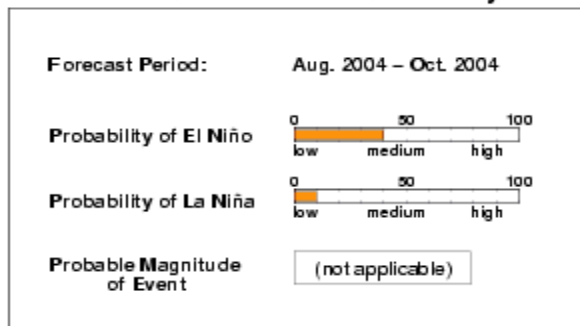


ENSO QUICK LOOK April 15, 2004

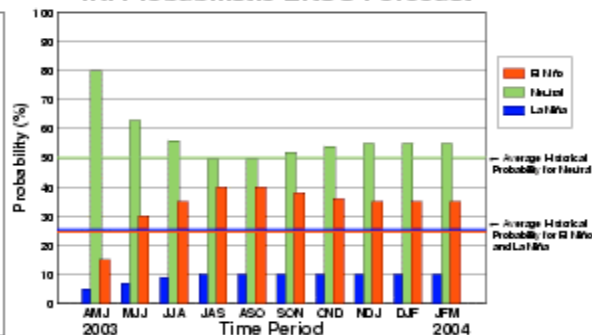
A monthly summary of the status of El Niño, La Niña and the Southern Oscillation, or "ENSO"

Overall conditions in the tropical Pacific remain near-neutral. Based on the latest observations and forecasts, it is likely that near-neutral but slightly warmer than average conditions will prevail through the first half of 2004.

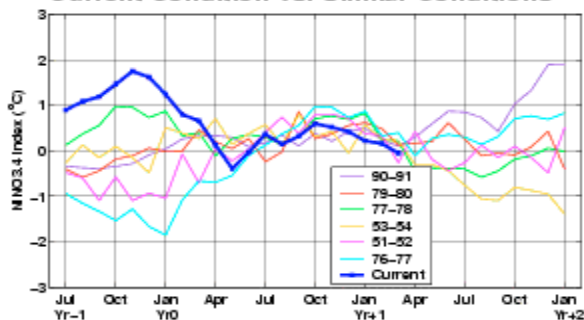
Current ENSO Forecast Summary¹



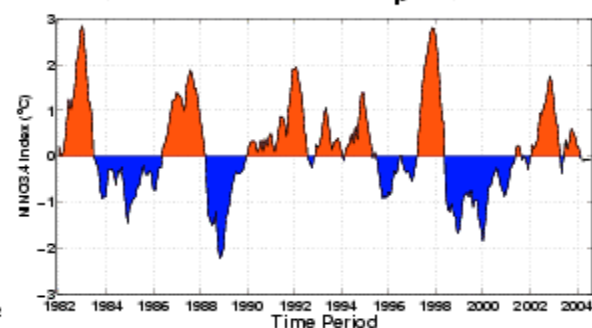
IRI Probabilistic ENSO Forecast²



Current Condition vs. Similar Conditions²



Historical Sea Surface Temperature Index²



Historically Speaking

El Niño and La Niña events tend to develop during the period Apr-Jun and they:

- Tend to reach their maximum strength during Dec-Feb
- Typically persist for 9-12 months, though occasionally persisting for up to 2 years
- Typically recur every 2 to 7 years

¹Probability of an El Niño refers to the likelihood of a sustained (that is, over several seasons) warming across a broad region of the eastern and central tropical Pacific, not just along coastal South America.

²Based on sea surface temperature departures from the long-term average over the 'NINO3.4' region (120-170W, 5S-5N).